

Richmond Park Road, Bournemouth, BH8 8TW



£1,200 Per Calendar Month



Fully Refurbished 2-Bedroom Ground Floor Flat with Garage – Available Now

A beautifully presented two-bedroom ground floor apartment, recently fully redecorated throughout with brand new flooring, situated in a sought-after residential location on Richmond Park Road, Bournemouth.

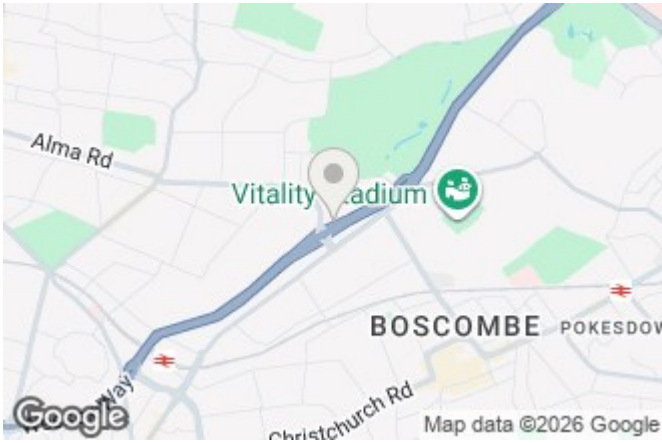
This bright and spacious property has been finished to a high standard and is ready for immediate occupation, making it an ideal home for professionals, couples or a small family.

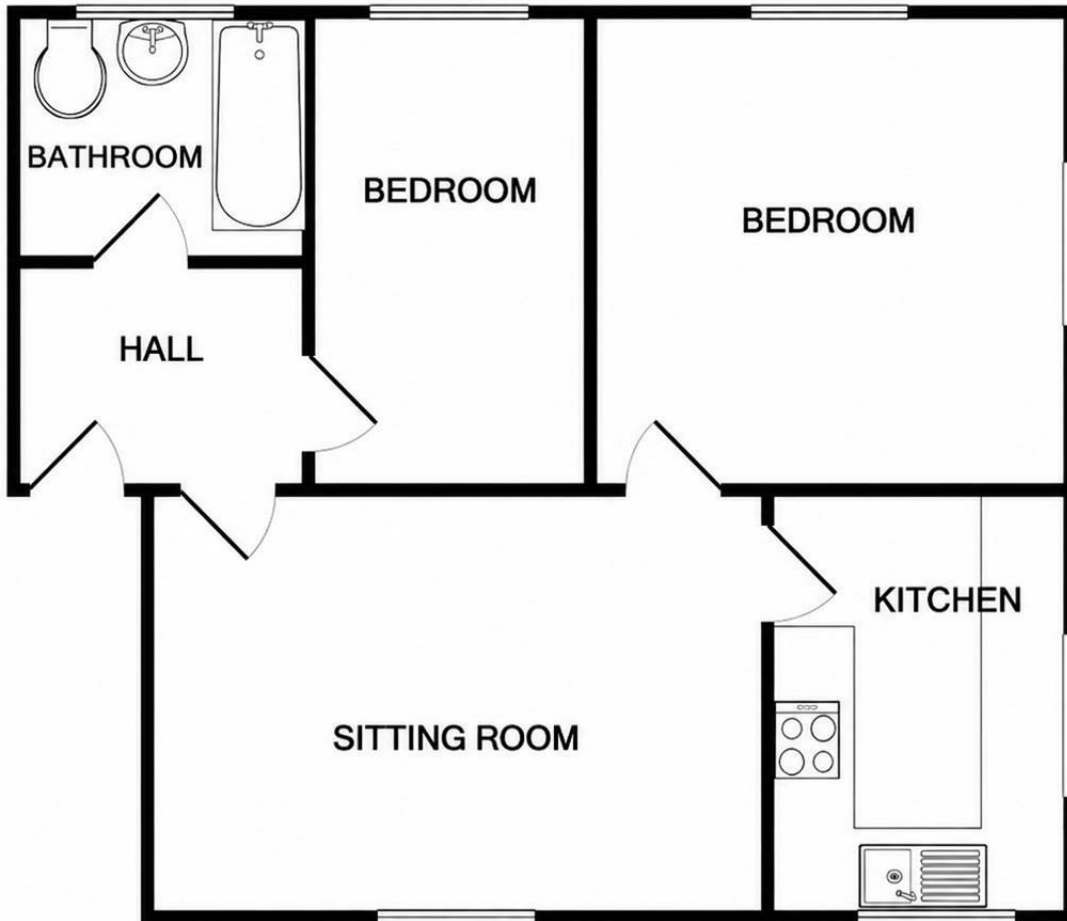
Property Features:

- * Two well-proportioned bedrooms
- * Spacious and bright living/dining room
- * Modern fitted kitchen
- * Contemporary bathroom with shower over bath

BELVOIR!

Belvoir Bournemouth
122-124 Castle Lane West, Bournemouth, Dorset, BH9 3JU





Energy Efficiency Rating		Current	Potential
Very energy efficient - lower running costs			
(92 plus) A			
(81-91) B			
(69-80) C			
(55-68) D		67	77
(39-54) E			
(21-38) F			
(1-20) G			
Not energy efficient - higher running costs			
England & Wales		EU Directive 2002/91/EC	

Environmental Impact (CO ₂) Rating		Current	Potential
Very environmentally friendly - lower CO ₂ emissions			
(92 plus) A			
(81-91) B			
(69-80) C			
(55-68) D			
(39-54) E			
(21-38) F			
(1-20) G			
Not environmentally friendly - higher CO ₂ emissions			
England & Wales		EU Directive 2002/91/EC	